



# Roxtec CF 24 transit

Openable transit for cabinets and enclosures.

The Roxtec CF 24 entry seal has a bolted together frame made from aluminum. Compression is integrated in the frame. The frame is openable and easily installed around existing cables. The product is supplied as ready-made kits which include all necessary components.



- Light-weight
- Area efficient
- Perfect for retrofit

**Product characteristics**



Fire rated



IP/UL NEMA

**Structure of installation**



Cabinets & enclosures

## Ratings & certificates

**Fire**

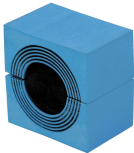
- E/EI rating according to EN 45545 E30

**Tightness**

- IP 66/67

## Sealing components

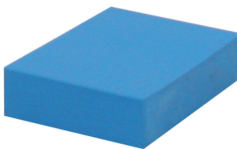
**Sealing components**



CM module with Multidiameter™



C Stayplate



CM solid compensation module



Lubricant

For detailed information, please visit [roxtec.com](https://www.roxtec.com).

## Pre-configured transit kits

mm/kg



CF 24/8



CF 24/12



CF 24/28

| Product  | Configuration                  | External dimensions<br>WxHxD | Aperture dimensions<br>w x h | Weight | Art. no       |
|----------|--------------------------------|------------------------------|------------------------------|--------|---------------|
| CF 24/8  | 8x (10.0-25.0)                 | 209 x 100 x 30               | 170(-2) x 60                 | 1.5    | CF00000240035 |
| CF 24/12 | 8x (3.5-16.5), 4x (9.5-32.5)   | 209 x 100 x 30               | 170(-2) x 60                 | 1.5    | CF00000241235 |
| CF 24/28 | 16x (3.5-16.5), 12x (3.5-10.5) | 209 x 100 x 30               | 170(-2) x 60                 | 1.5    | CF00000242835 |



The product information provided by Roxtec does not release the purchaser of the Roxtec system, or part thereof, from the obligation to independently determine the suitability of the products for the intended process, installation and/or use.

Roxtec gives no guarantee for the Roxtec system or any part thereof and assumes no liability for any loss or damage whatsoever, whether direct, indirect, consequential, loss of profit or otherwise, occurred or caused by the Roxtec systems or installations containing components not manufactured by an authorized manufacturer and/or occurred or caused by the use of the Roxtec system in a manner or for an application other than for which the Roxtec system was designed or intended.

Roxtec expressly excludes any implied warranties of merchantability and fitness for a particular purpose and all other express or implied representations and warranties provided by statute or common law. User determines suitability of the Roxtec system for intended use and assumes all risk and liability in connection therewith. In no event shall Roxtec be liable for indirect, consequential, punitive, special, exemplary or incidental damages or losses.

The Roxtec products are offered and sold in accordance with the conditions of the Roxtec General Terms of Sales. The latest version of the Roxtec General Terms of Sales can be downloaded from <https://www.roxtec.com/en/about-us/about-roxtec/general-terms-of-sales/>

We reserve the right to make changes to the product and technical information without further notice. Any errors in print or entry are no claims for indemnity. The content of this publication is the property of Roxtec International AB and is protected by copyright.

This document was generated on: 2024-04-30